

Tesla Cybertruck

Benchmark program

 benchmarking@fev.com

 shop.fev.com

FEV



Tech Nuggets
Vehicle

FEV is initiating an extensive benchmark program to analyze the technology underlying the Tesla Cybertruck

Tesla Cybertruck Overview

Key Specifications



547 km



250 kW



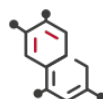
448 kW / 671 Nm



120 kWh



Cylindrical



Li-NMC



50 min



21.9 kWh/100km

Key Features

- ▶ HV battery system with **120 kWh** of usable energy, employing **4680** NMC cells and utilizing a **cell-to-pack** approach
- ▶ System power of **448 kW** and **671 Nm** in the mid-level variant
 - Front motor is an ASM machine and delivers $222 \text{ kW}_{\text{peak}}$
 - Rear motor is a PMSM machine and delivers $226 \text{ kW}_{\text{peak}}$
- ▶ Drive-by-wire **four-wheel steering**
- ▶ Utilizes **48 V system** with distributed module architecture, eliminating the need for one central controller
- ▶ **Ethernet communication** is enabled, running **gigabit ethernet** cabling for data, along with the 48 V power on the same cable

FEV provides benchmarking services that combine technical know-how, testing facilities & costing expertise

Our Services

BENCHMARKING



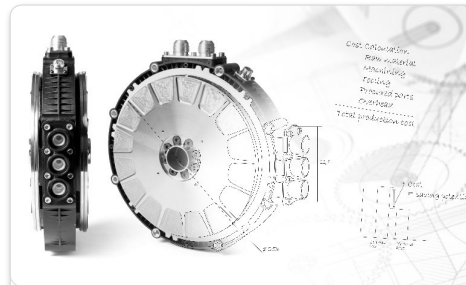
- 4** BENCHMARK CENTERS
- >12** TECH-CENTERS
- >300** TEST BENCHES
- >5000** ENGINEERS



Performance Benchmarking



Design Benchmarking



Cost Benchmarking



Benchmarking Academy

Get in touch with us

... and stay tuned for updates!



Greg Kolwich

Director



Steve Kraemer

Director

 benchmarking@fev.com

 shop.fev.com

FEV